

COMMUNE DE MONT

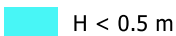
CARTE DES ZONES INONDABLES PAR DÉBOREMENT DE COURS D'EAU

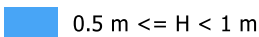
CRUE TYPE DECENNALE (Q10)

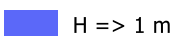
Carte 1

LEGENDE

Hauteurs d'eau max :

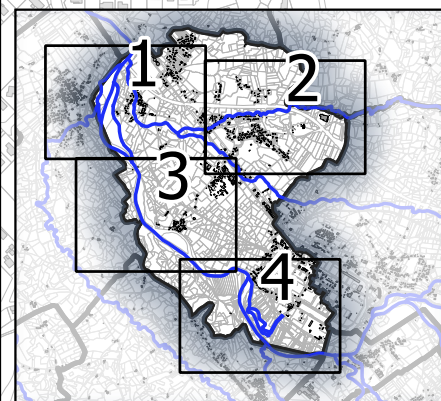
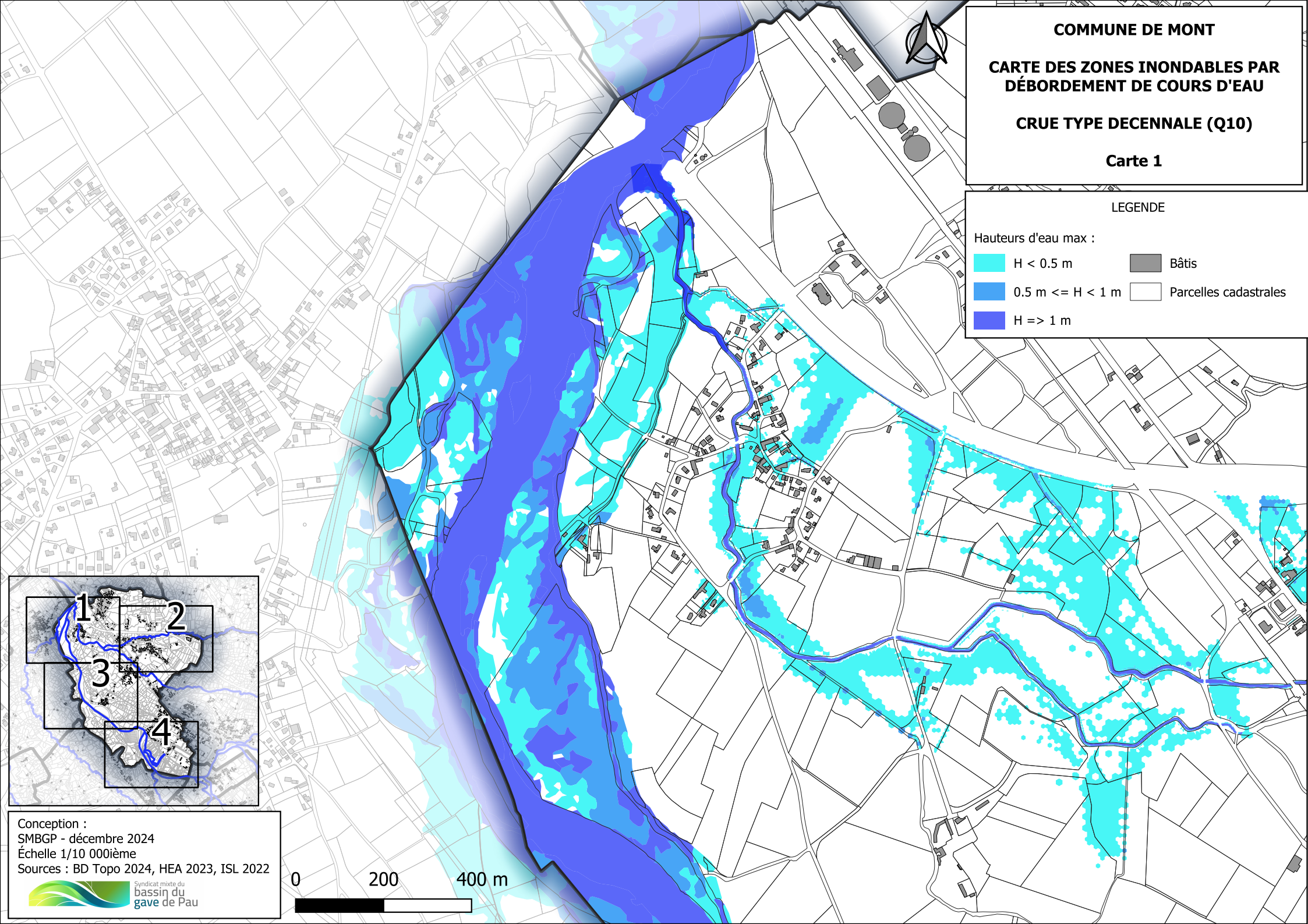
 H < 0.5 m

 0.5 m <= H < 1 m

 H >= 1 m

 Bâties

 Parcelles cadastrales



Conception :
SMBGP - décembre 2024
Échelle 1/10 000ième
Sources : BD Topo 2024, HEA 2023, ISL 2022



0 200 400 m



COMMUNE DE MONT

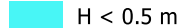
CARTE DES ZONES INONDABLES PAR DÉBORDEMENT DE COURS D'EAU

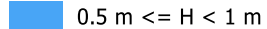
CRUE TYPE CINQUANTENNALE (Q50)

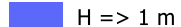
Carte 1

LEGENDE

Hauteurs d'eau max :

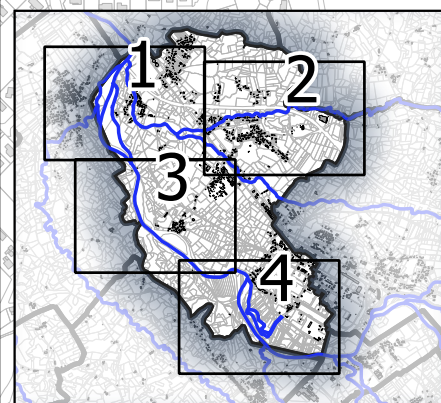
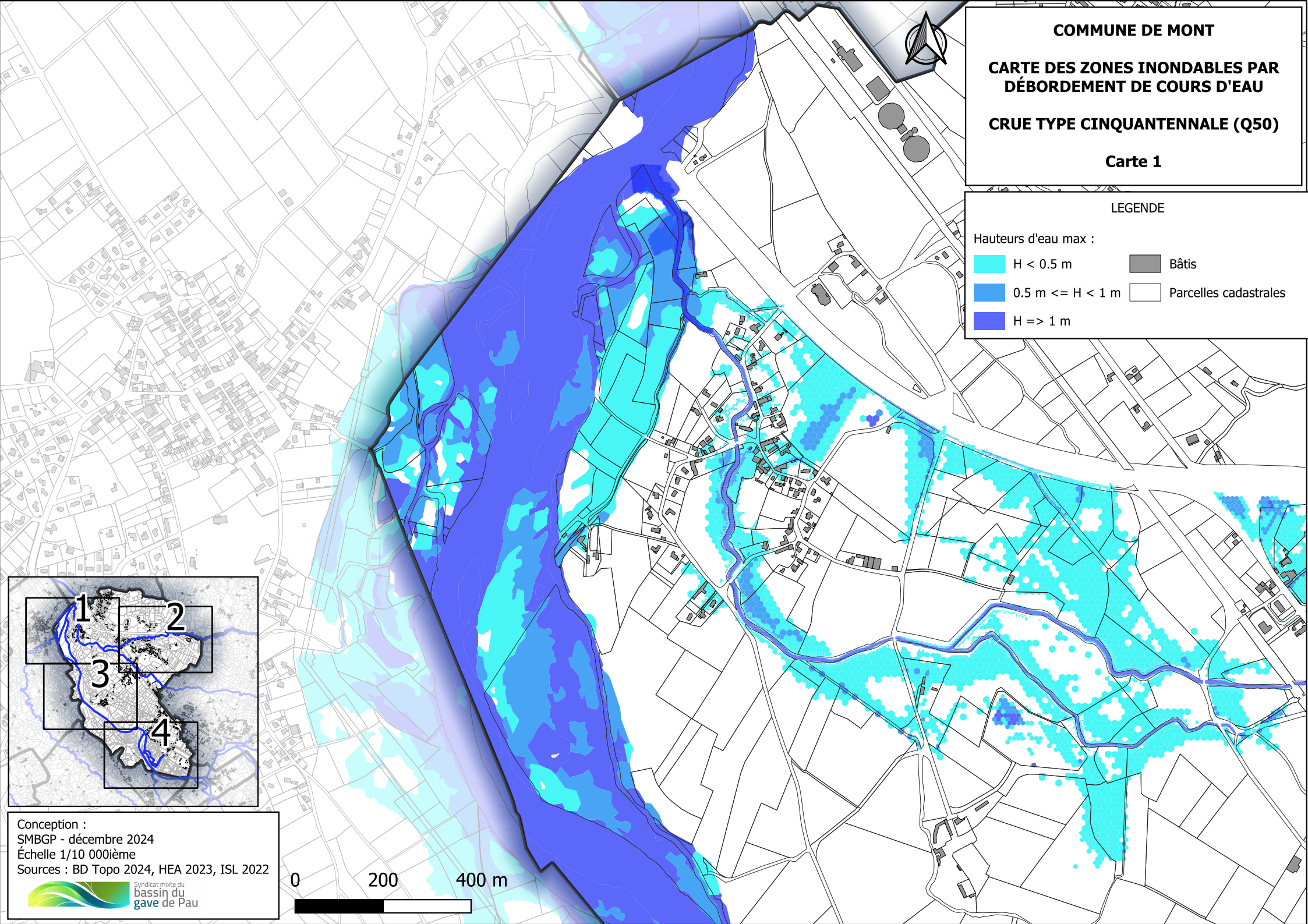
 H < 0.5 m

 0.5 m <= H < 1 m

 H >= 1 m

 Bâties

 Parcelles cadastrales



Conception :
SMBGP - décembre 2024
Échelle 1/10 000ième
Sources : BD Topo 2024, HEA 2023, ISL 2022



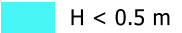

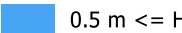

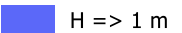
0 200 400 m

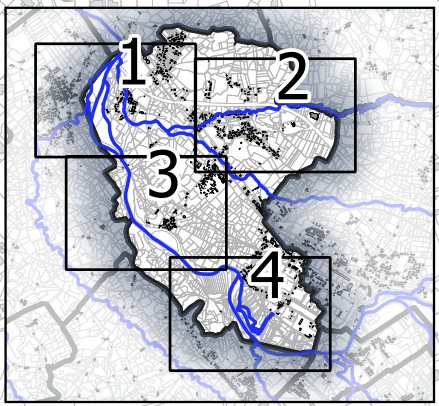
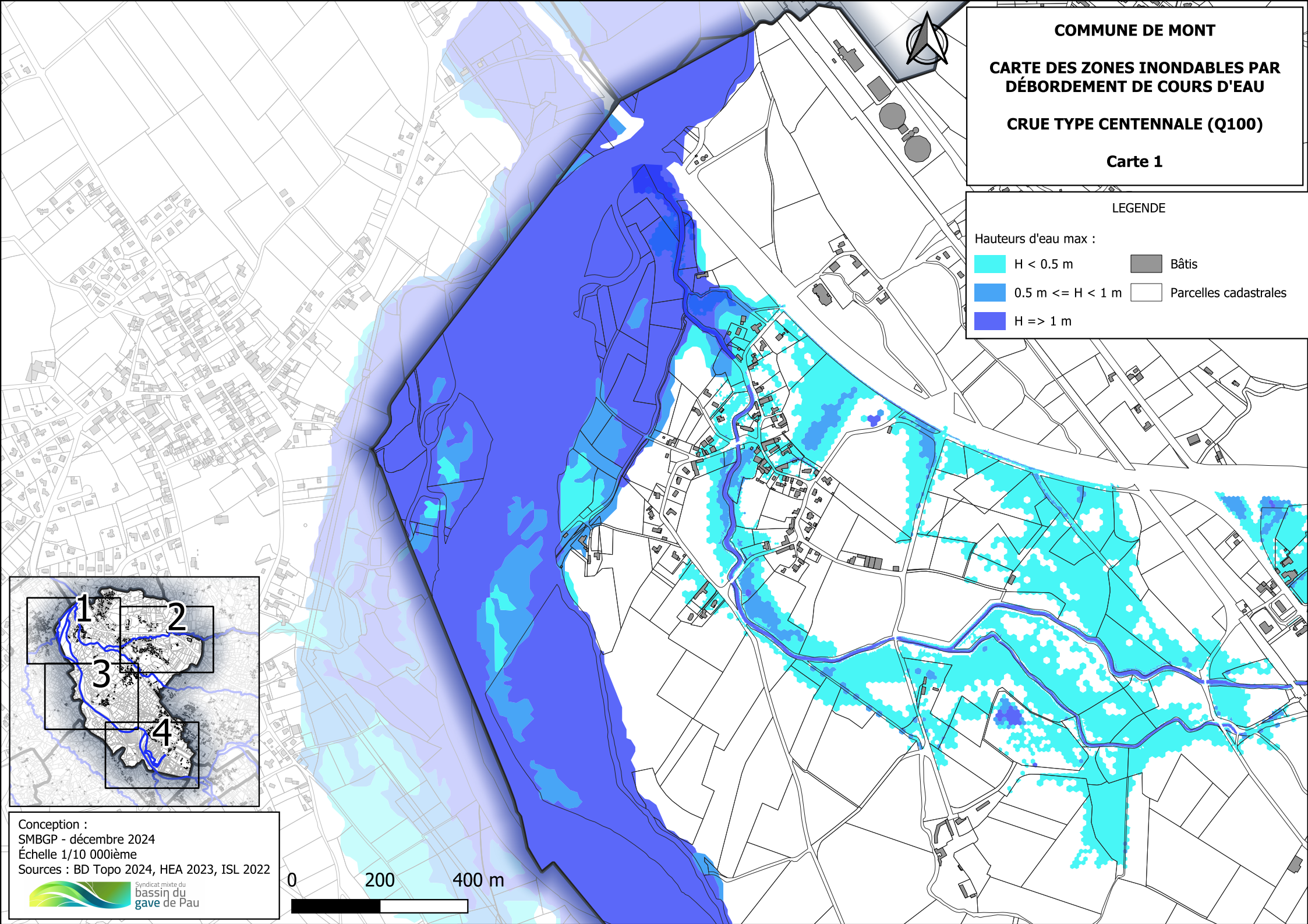


COMMUNE DE MONT
CARTE DES ZONES INONDABLES PAR DÉBOREMENT DE COURS D'EAU
CRUE TYPE CENTENNALE (Q100)
Carte 1

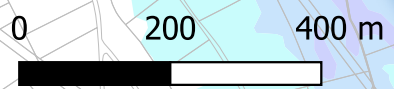
LEGENDE

Hauteurs d'eau max :

 H < 0.5 m	 Bâties
 0.5 m <= H < 1 m	 Parcelles cadastrales
 H >= 1 m	



Conception :
SMBGP - décembre 2024
Échelle 1/10 000ième
Sources : BD Topo 2024, HEA 2023, ISL 2022

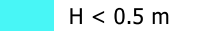

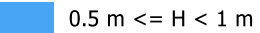

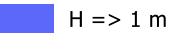


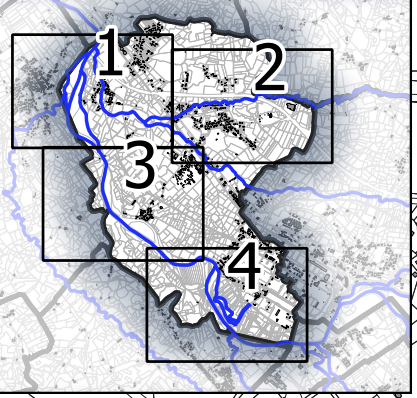
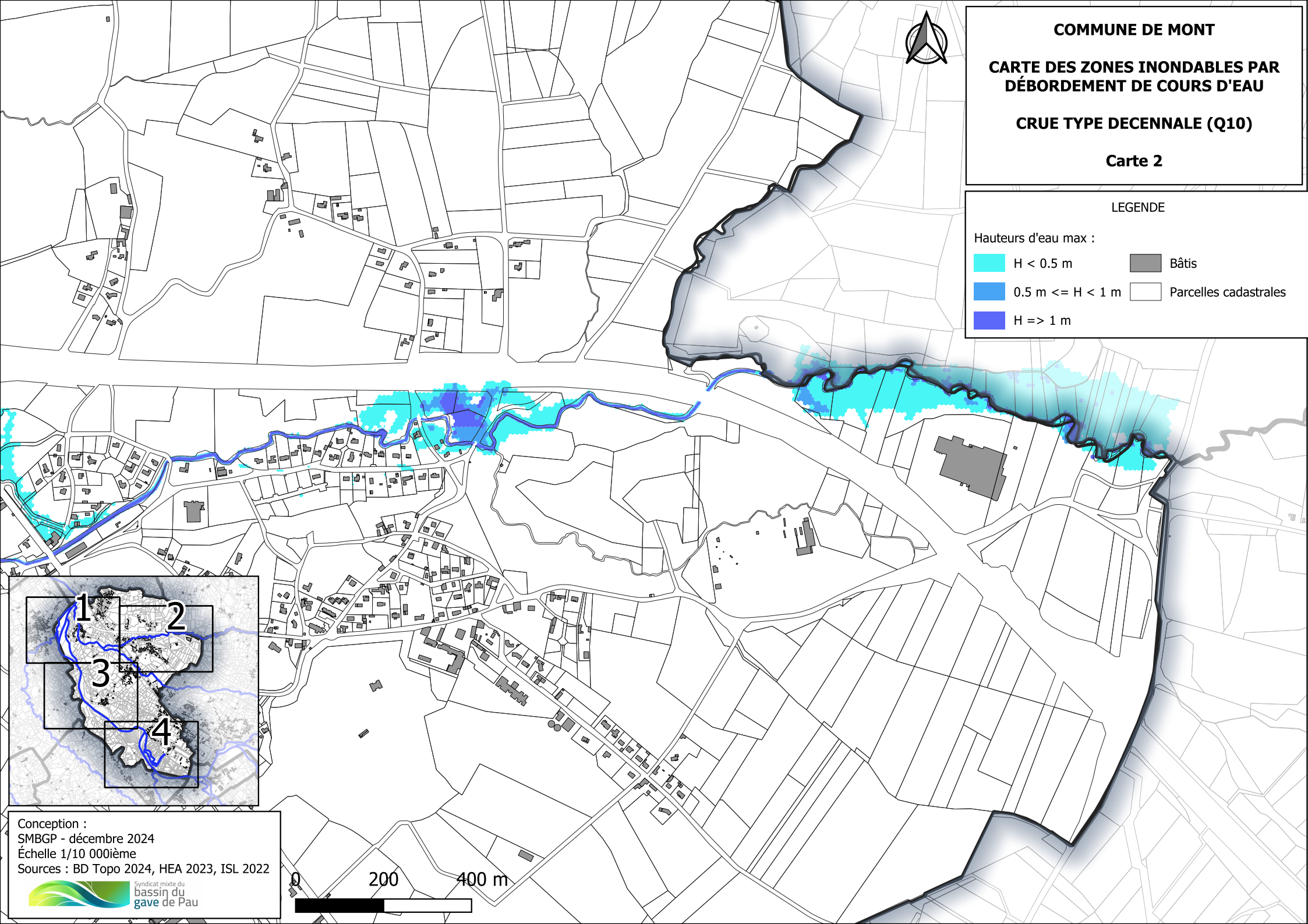


COMMUNE DE MONT
CARTE DES ZONES INONDABLES PAR DÉBOURSEMENT DE COURS D'EAU
CRUE TYPE DECENNALE (Q10)
Carte 2

LEGENDE

Hauteurs d'eau max :

 H < 0.5 m	 Bâties
 0.5 m <= H < 1 m	 Parcelles cadastrales
 H >= 1 m	



Conception :
SMBGP - décembre 2024
Échelle 1/10 000ième
Sources : BD Topo 2024, HEA 2023, ISL 2022








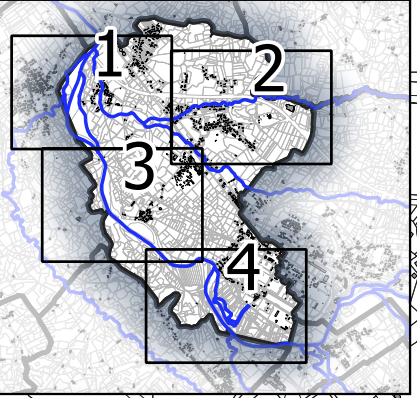
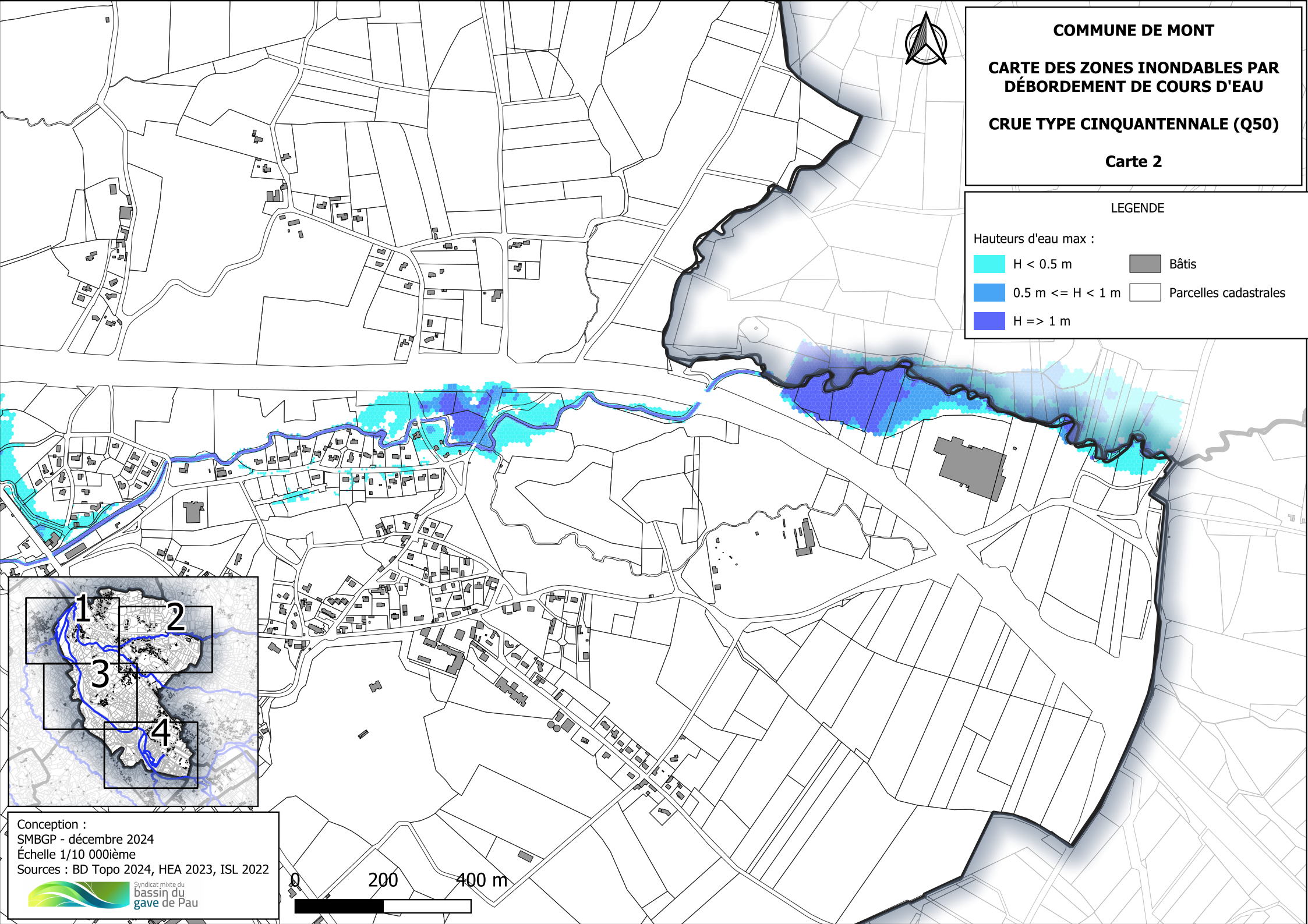


COMMUNE DE MONT
CARTE DES ZONES INONDABLES PAR DÉBOREMENT DE COURS D'EAU
CRUE TYPE CINQUANTENNALE (Q50)
Carte 2

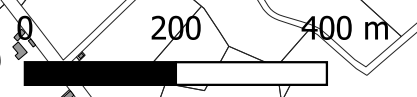
LEGENDE

Hauteurs d'eau max :

 H < 0.5 m	 Bâties
 0.5 m <= H < 1 m	 Parcelles cadastrales
 H >= 1 m	



Conception :
SMBGP - décembre 2024
Échelle 1/10 000ième
Sources : BD Topo 2024, HEA 2023, ISL 2022








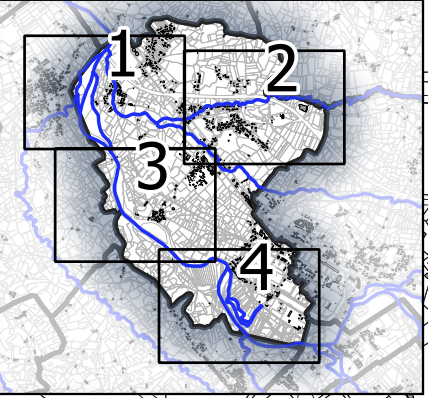
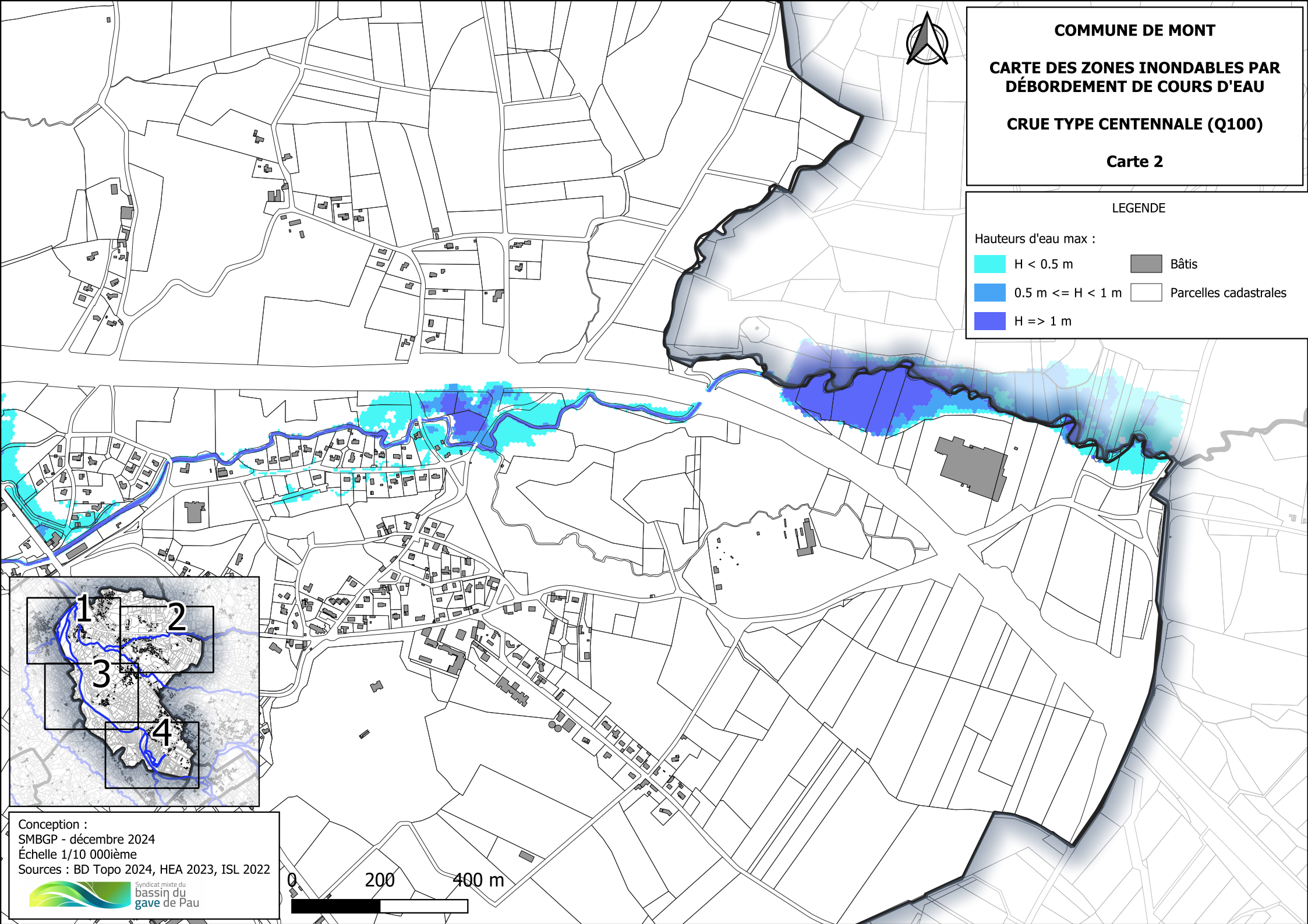


COMMUNE DE MONT
CARTE DES ZONES INONDABLES PAR DÉBOREMENT DE COURS D'EAU
CRUE TYPE CENTENNALE (Q100)
Carte 2

LEGENDE

Hauteurs d'eau max :

 H < 0.5 m	 Bâties
 0.5 m <= H < 1 m	 Parcelles cadastrales
 H >= 1 m	



Conception :
SMBGP - décembre 2024
Échelle 1/10 000ième
Sources : BD Topo 2024, HEA 2023, ISL 2022

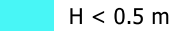

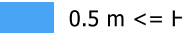

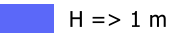


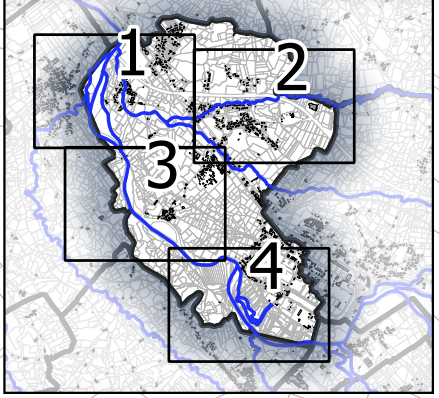
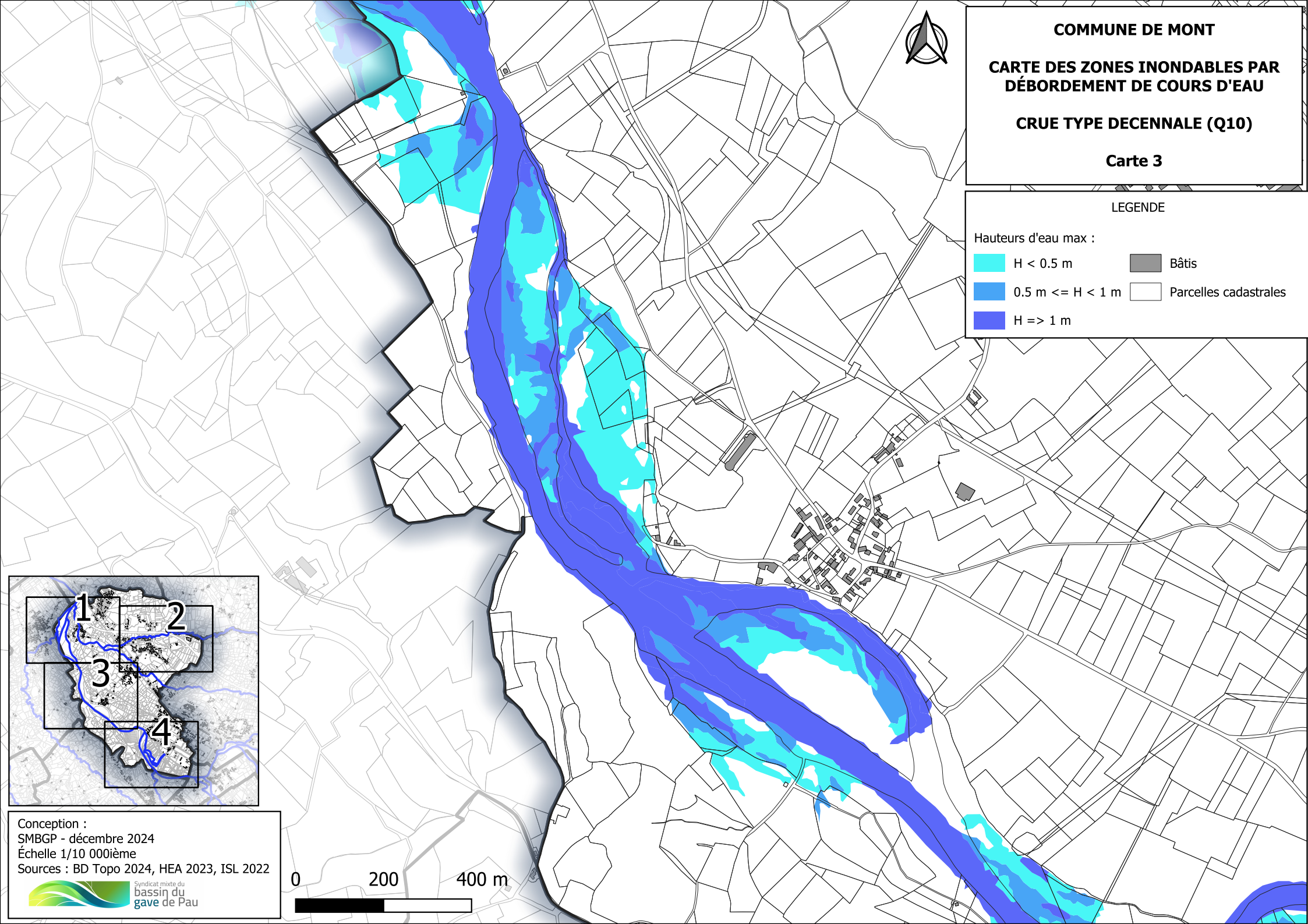


COMMUNE DE MONT
CARTE DES ZONES INONDABLES PAR DÉBOREMENT DE COURS D'EAU
CRUE TYPE DECENNALE (Q10)
Carte 3

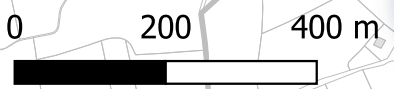
LEGENDE

Hauteurs d'eau max :

	H < 0.5 m		Bâties
	0.5 m <= H < 1 m		Parcelles cadastrales
	H >= 1 m		



Conception :
SMBGP - décembre 2024
Échelle 1/10 000ième
Sources : BD Topo 2024, HEA 2023, ISL 2022








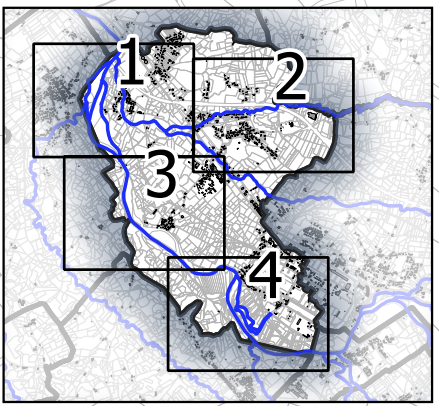


COMMUNE DE MONT
CARTE DES ZONES INONDABLES PAR DÉBORDEMENT DE COURS D'EAU
CRUE TYPE CINQUANTENNALE (Q50)
Carte 3

LEGENDE

Hauteurs d'eau max :

 H < 0.5 m	 Bâties
 0.5 m <= H < 1 m	 Parcelles cadastrales
 H >= 1 m	



Conception :
SMBGP - décembre 2024
Échelle 1/10 000ième
Sources : BD Topo 2024, HEA 2023, ISL 2022








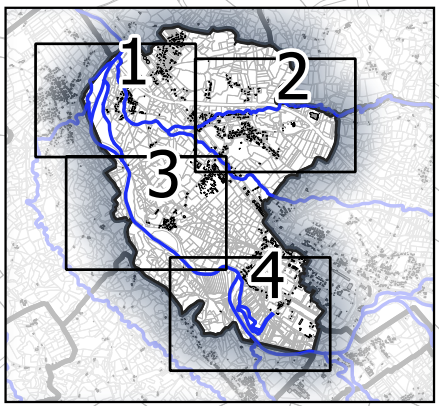
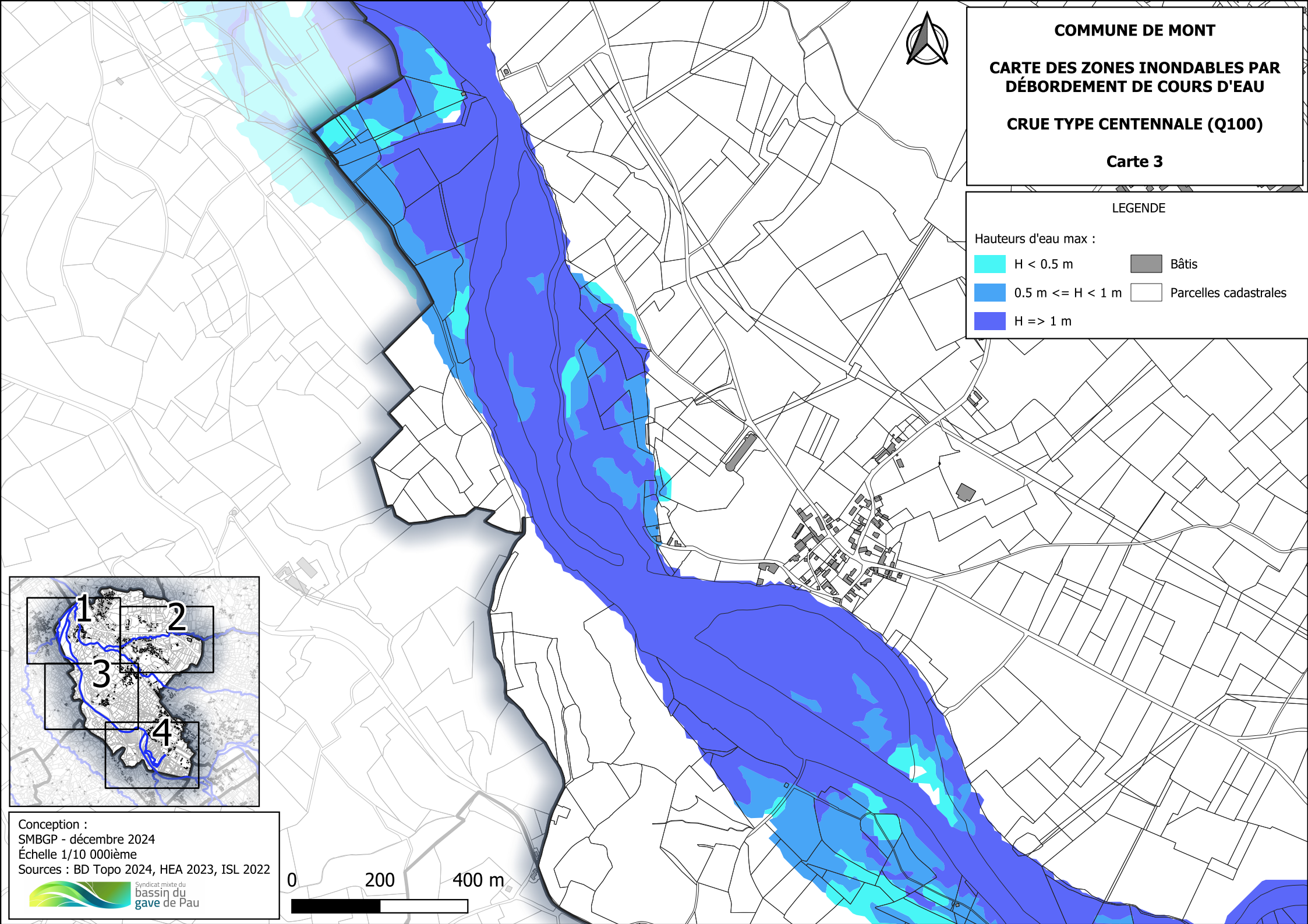


COMMUNE DE MONT
CARTE DES ZONES INONDABLES PAR DÉBOREMENT DE COURS D'EAU
CRUE TYPE CENTENNALE (Q100)
Carte 3

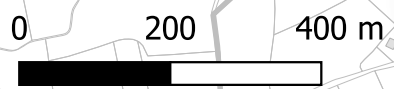

LEGENDE

Hauteurs d'eau max :

 H < 0.5 m	 Bâties
 0.5 m <= H < 1 m	 Parcelles cadastrales
 H => 1 m	



Conception :
SMBGP - décembre 2024
Échelle 1/10 000ième
Sources : BD Topo 2024, HEA 2023, ISL 2022



COMMUNE DE MONT


CARTE DES ZONES INONDABLES PAR DÉBOURDEMENT DE COURS D'EAU


CRUE TYPE DECENNALE (Q10)


Carte 4

LEGENDE

Hauteurs d'eau max :

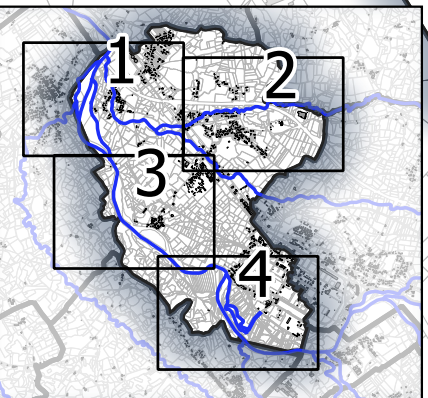
 H < 0.5 m

 0.5 m <= H < 1 m

 H >= 1 m

 Bâties

 Parcelles cadastrales



Conception :
SMBGP - décembre 2024
Échelle 1/10 000ième
Sources : BD Topo 2024, HEA 2023, ISL 2022



0 200 400 m



COMMUNE DE MONT


CARTE DES ZONES INONDABLES PAR DÉBORDEMENT DE COURS D'EAU


CRUE TYPE CINQUANTENNALE (Q50)


Carte 4

LEGENDE

Hauteurs d'eau max :

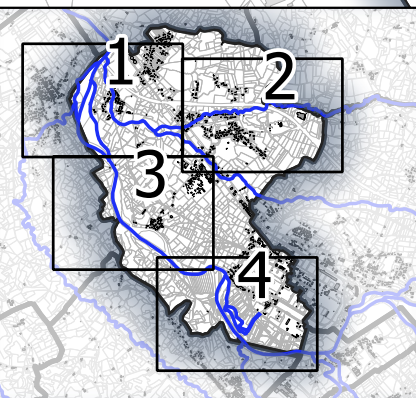
 H < 0.5 m

 0.5 m <= H < 1 m

 H >= 1 m

 Bâties

 Parcelles cadastrales



Conception :
SMBGP - décembre 2024
Échelle 1/10 000ième
Sources : BD Topo 2024, HEA 2023, ISL 2022



0 200 400 m



COMMUNE DE MONT


CARTE DES ZONES INONDABLES PAR DÉBOURDEMENT DE COURS D'EAU


CRUE TYPE CENTENNALE (Q100)


Carte 4

LEGENDE

Hauteurs d'eau max :

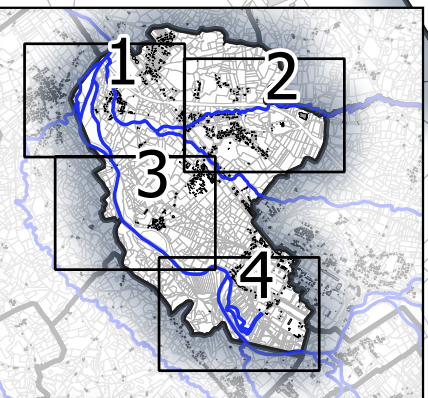
 H < 0.5 m

 0.5 m <= H < 1 m

 H >= 1 m

 Bâties

 Parcelles cadastrales



Conception :
SMBGP - décembre 2024
Échelle 1/10 000ième
Sources : BD Topo 2024, HEA 2023, ISL 2022

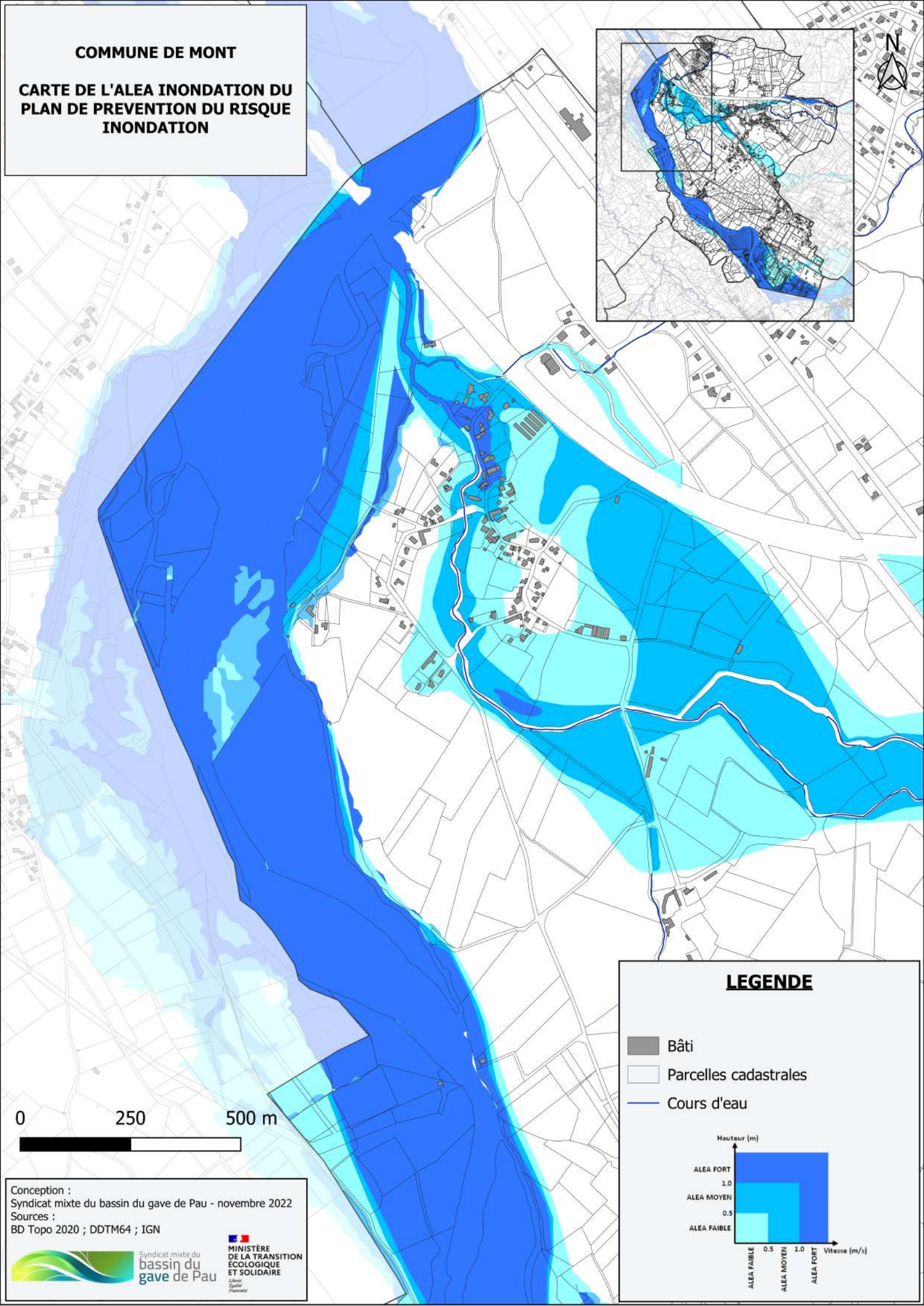
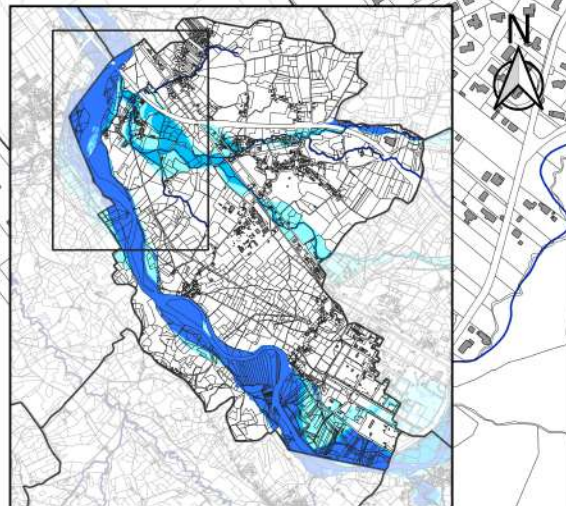


0 200 400 m



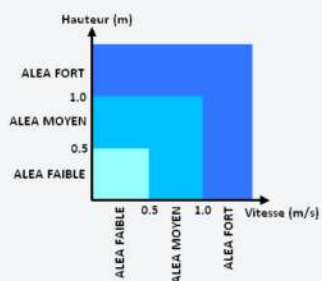
COMMUNE DE MONT

CARTE DE L'ALEA INONDATION DU PLAN DE PREVENTION DU RISQUE INONDATION



LEGENDE

- Bâti
- Parcelles cadastrales
- Cours d'eau



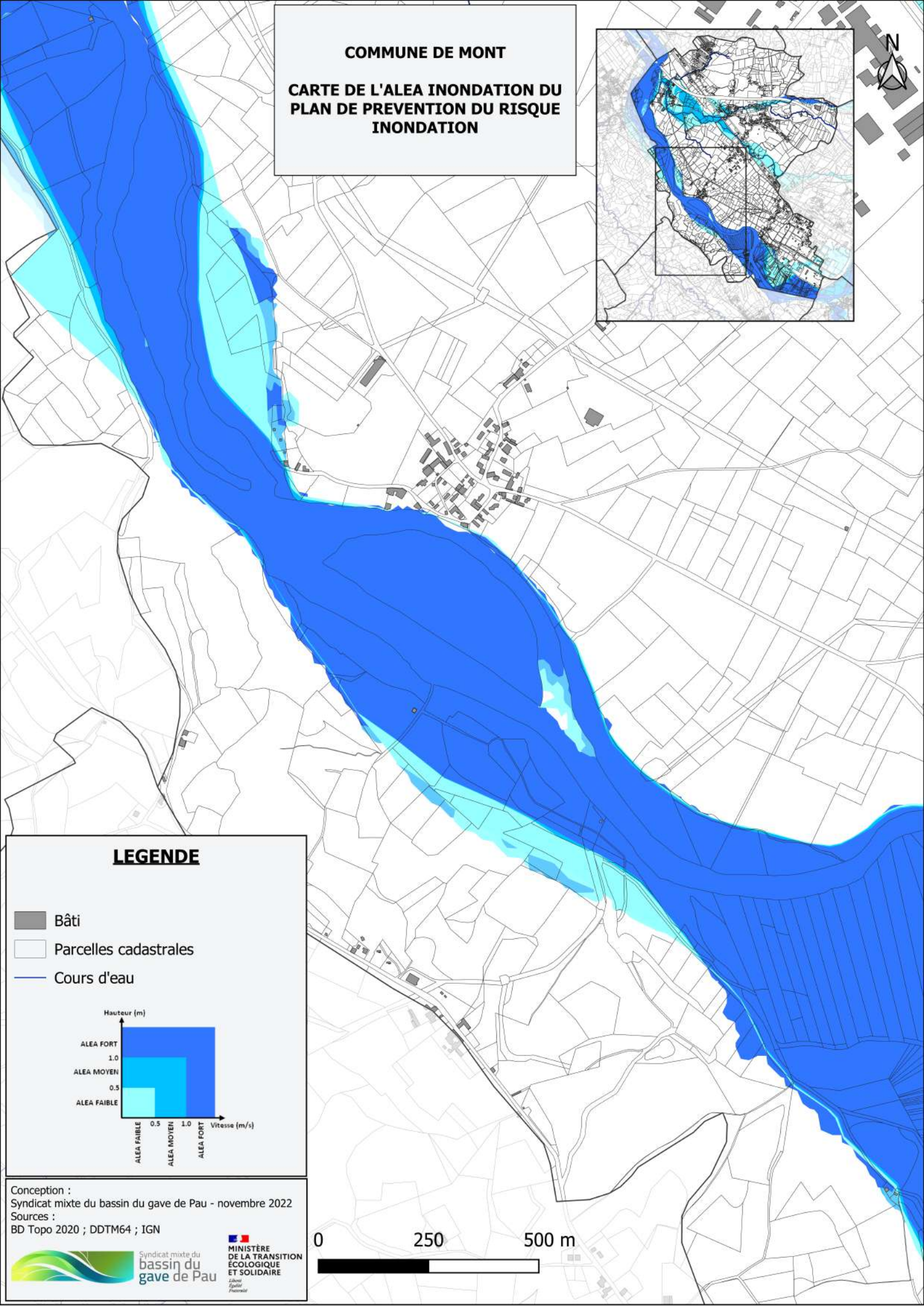
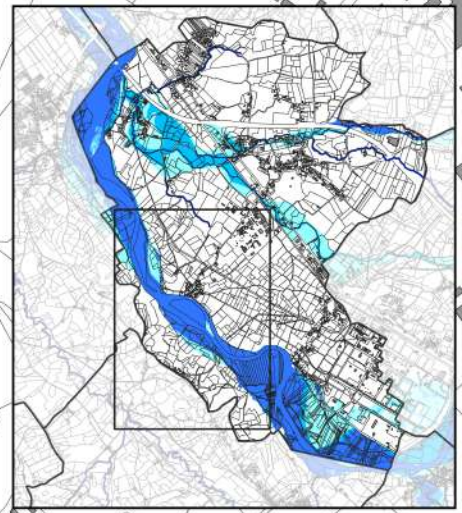
Conception :
Syndicat mixte du bassin du gave de Pau - novembre 2022
Sources :
BD Topo 2020 ; DDTM64 ; IGN



Syndicat mixte du
bassin du
gave de Pau

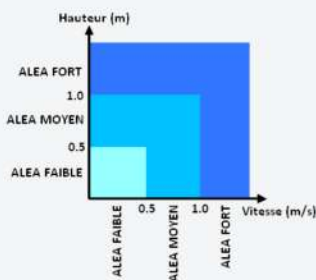


COMMUNE DE MONT
CARTE DE L'ALEA INONDATION DU
PLAN DE PREVENTION DU RISQUE
INONDATION



LEGENDE

-  Bâti
-  Parcelles cadastrales
-  Cours d'eau



Conception :
 Syndicat mixte du bassin du gave de Pau - novembre 2022
 Sources :
 BD Topo 2020 ; DDTM64 ; IGN

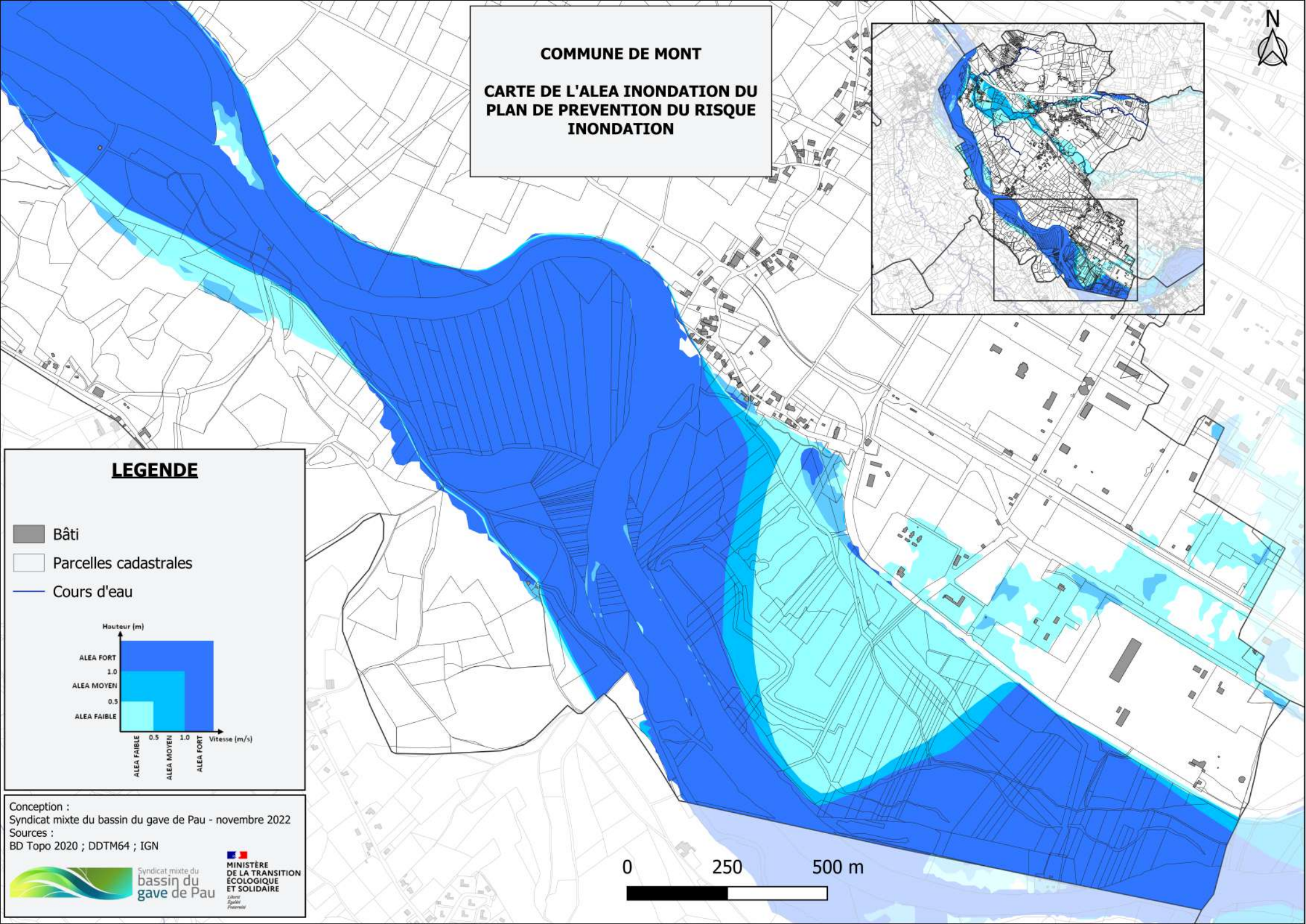
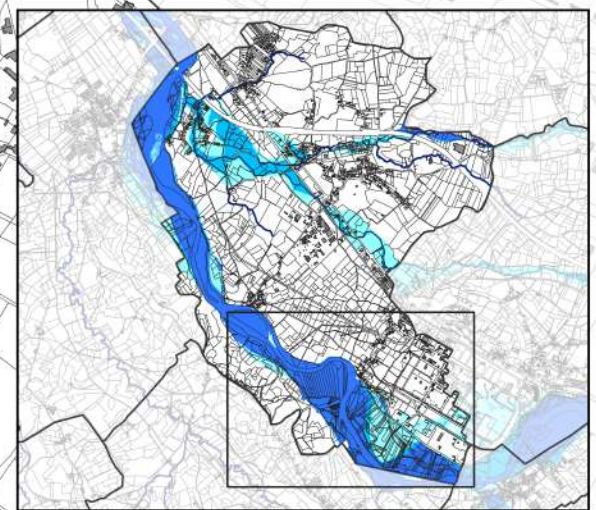


Syndicat mixte du
bassin du
gave de Pau


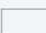



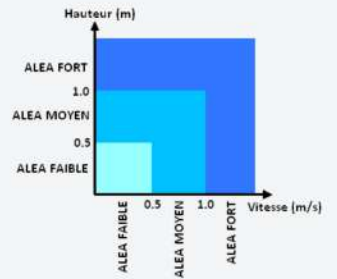


COMMUNE DE MONT
CARTE DE L'ALEA INONDATION DU
PLAN DE PREVENTION DU RISQUE
INONDATION



LEGENDE

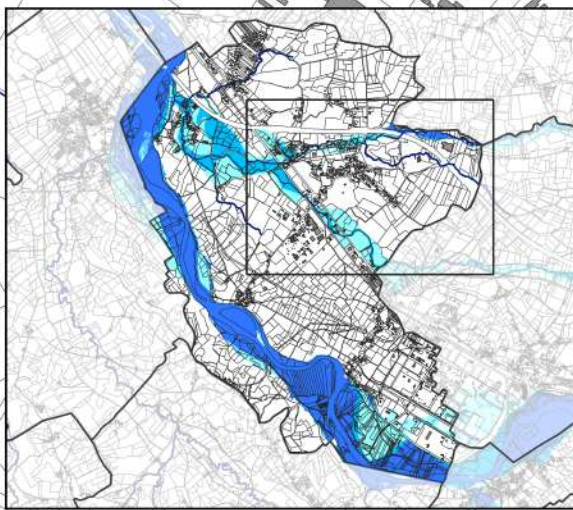
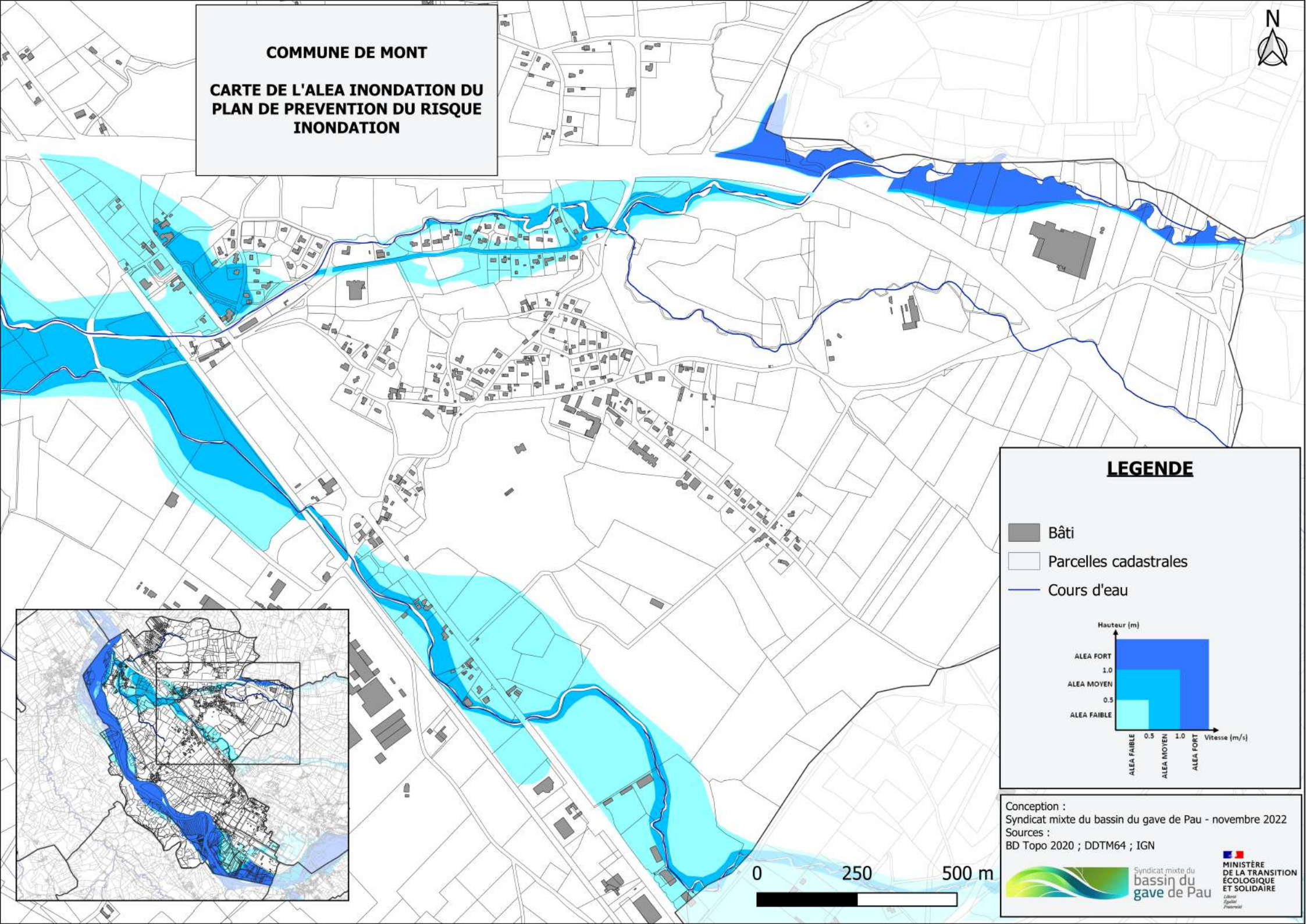
-  Bâti
-  Parcelles cadastrales
-  Cours d'eau



Conception :
Syndicat mixte du bassin du gave de Pau - novembre 2022
Sources :
BD Topo 2020 ; DDTM64 ; IGN

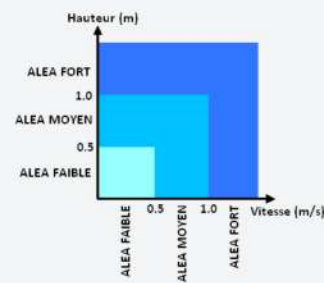


COMMUNE DE MONT
CARTE DE L'ALEA INONDATION DU
PLAN DE PREVENTION DU RISQUE
INONDATION



LEGENDE

-  Bâti
-  Parcelles cadastrales
-  Cours d'eau



Conception :
Syndicat mixte du bassin du gave de Pau - novembre 2022
Sources :
BD Topo 2020 ; DDTM64 ; IGN